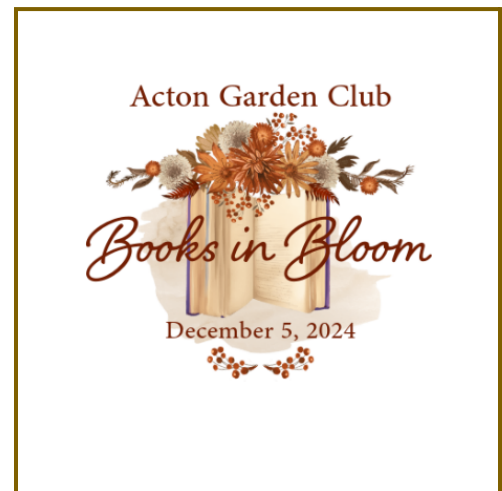


## Books in Bloom

The Acton Garden Club capped off its year-long celebration of “90 Years of Service to the Community” with a public floral design show, *Books in Bloom*, December 5–7, 2024.

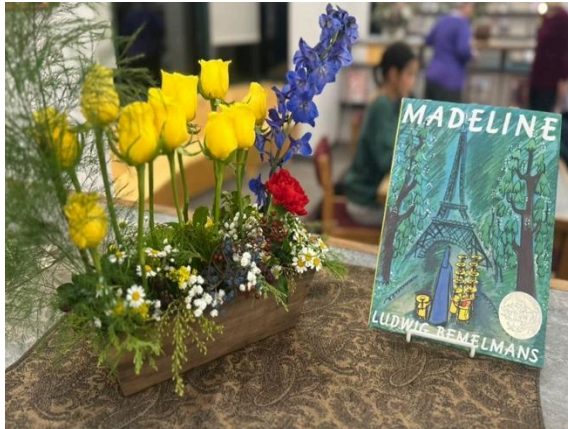
Presented at the Acton Memorial Library, the Thursday evening reception at the Meeting Room had 40 attendees and featured designers discussing their floral interpretations of books published in the 1930’s and included *Madeline*, *Mary Poppins*, *The Little Engine that Could*, *Our Town*, *The Joy of Cooking*, *The Hobbit*, *Tender is the Night*, *I Claudius*, and *How to Win Friends and Influence People*. The displays were moved after the reception to the 2<sup>nd</sup> floor Periodical area, accompanied by the designers’ written statements of intent to provide context and insight into their design choices and creative process.



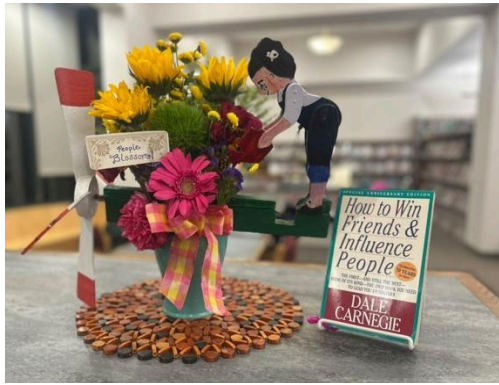
Photos By C. Fochtman

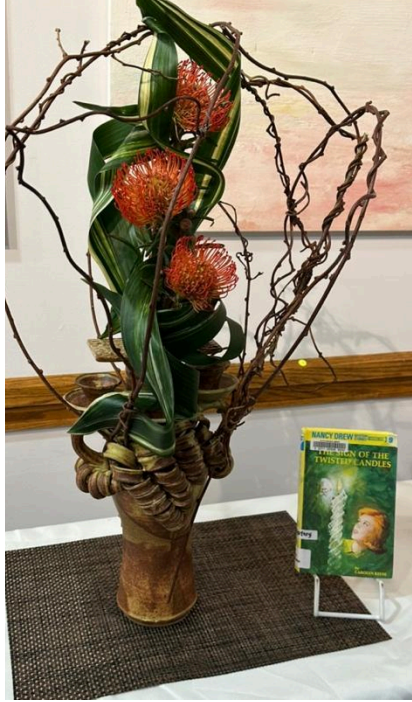


Photos by AM Testarmata for use in the article













See the link [AGC Books in Bloom Event Profile](#) for a document detailing the exhibits.

#### Acton Exchange Article

##### 2024 - Books in Bloom

What does “I Claudius”, “Mary Poppins” and “The Little Engine That Could” have in common?

They were all published in 1934 and featured in the Books in Bloom Festival at the Acton Memorial Library December 5-7 2024, capping off the Acton Garden Club’s year-long celebration of “90 years of Service to the Community” “with a public floral design show featuring these titles and other such classics such as Madeline, The Hobbit and Tender is the Night.

In fact, if you are looking for some good reads to get you through the next two months of winter, check out this list the 1934 classics featured, and you will find some interesting reads.

The floral show opened Presented at the Acton Memorial Library, the Thursday evening reception at the Meeting Room had 40 attendees and featured designers discussing their floral interpretations of books published in the 1930's. The displays were moved after the reception to the 2<sup>nd</sup> floor Periodical area, accompanied by the designers' written statements of intent to provide context and insight into their design choices and creative process.